

# The Shmily Tree

by Peter Gardini (From an idea by Barry Mitchell)

This routine is based on the same principle as the Axtell Expressions drawing board. The big advantage of this version however is that it is cheap and easy to make up. The version shown in the pictures was made for less than £5.

## You will need

A large glass fronted picture frame. The one shown in the drawing has an aluminium effect frame and was purchased in a “PoundStretcher” shop. I replaced the glass in my frame with thin perspex or plexiglass.

A black “Dry Wipe” marker pen for use on white boards.

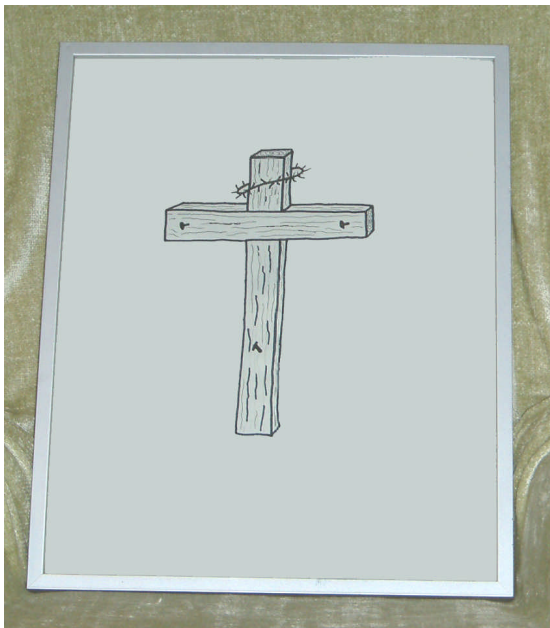
A large duster to wipe the board.

## How To Make it

Remove the back panel from the picture frame and take out any picture that came with the frame. If the picture has a blank back, this could be used to draw on.

Draw a large cross complete with nails and crown of thorns as shown in (Picture 1). Make this drawing as bold as possible so that it can be seen from a great distance.

Place the finished drawing into the picture frame under the glass and refit the back panel.



**Picture 1**



**Picture 2**

Using a black “Dry Wipe” marker pen, draw a tree on the glass as in (Picture 2) so that it hides the cross under the glass. The preparation is now complete.

## Routine and patter

“Today I am going to tell you about three very special trees which are mentioned in the Bible”. Pick up the picture of the tree and display it to the audience (Picture 2)

## The Shmily Tree

“The first tree was called the tree of the knowledge of good and evil. God told Adam and Eve that they must never eat the fruit from this tree. If they ate the fruit from this tree they would die as they had disobeyed him.”

***Fruit can be drawn on the tree as the story is being told***

“We don’t know what the forbidden fruit was, some people say it could have been apples, others say it was probably apricots. Whatever the fruit was they were tricked by the serpent into eating the fruit. Because they disobeyed God and ate the fruit they inherited a terrible thing called sin. As they were now sinners it made God very sad and he sent them away from the beautiful garden. This wasn’t because he was angry with them or because he hated them, it was because he loved them. How could this be?????”

Also in the garden was the second tree in the story, this tree was called the tree of life. Anyone eating the fruit of this tree would live forever. God knew that if Adam and Eve ate the fruit of this tree they would live forever, but they would live forever as sinners.

What was God to do, he couldn’t take back his words that they would die or it would have made his words a lie and God does not lie.

Somebody who was perfect had caused sin, so somebody perfect had to die to pay the price for that sin. There was now nobody on earth that was free of sin so God had to provide a perfect person to die in our place.

He sent his son Jesus Christ to be born as a man in Bethlehem and allow him to be nailed to the last special tree in the story. This was not a nice tree this was a tree of suffering, sorrow and shame.”

***Pick up the cloth and slowly wipe the tree away exposing the cross as these words are spoken***

“This tree was the cross at Calvary where the Son of God the Lord Jesus Christ gave his life and shed his blood for you and for me. This third tree hasn’t got a name but you can think of it as The Smiley Tree.”



**Picture 3**

## The Shmily Tree

*With a black Dry Wipe pen write the letters S H M I L Y down the right hand side of the cross (Picture 3).*

Say the letters as you write them in bold down, " **S H M I L Y** ".

This stands for **See How Much I Love You** "

This presentation is very powerful and may be presented to children or adults. As it is so simple to make up please take the time to make the drawing and the presentation the best that you can.